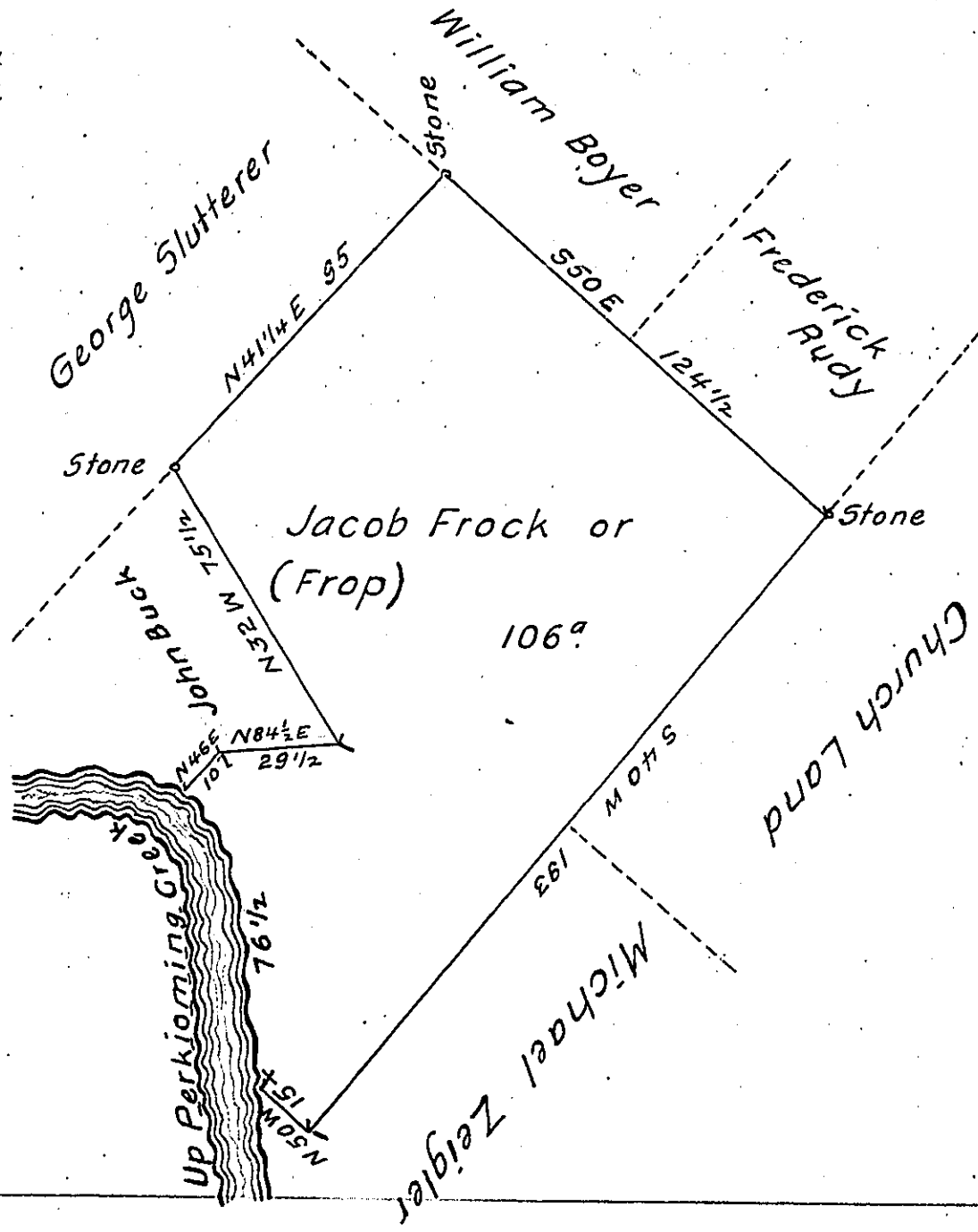


The bearings and Distances up the Creek are

N 9 W 56 1/2
N 30 W 20
76 1/2



The above is a Draught of a tract of Land Situate in Upper Salford Township Montgomery County Containing One hundred and Six acres and the allowance of Six ~~7~~ Cent & c^a. Surveyed the 22nd July 1806. it being part of a tract of One hundred and twenty acres and Sixty perches which ^{has} been Surveyed and Return^d on a Warrant granted to Jacob Frock the 29th July 1734 ~

To Samuel Cochran Esq. } ~~7~~ Saml. Rees D.S.
Surveyor General.

IN TESTIMONY that the above is a copy of the original remaining on file in the Department of Internal Affairs of Pennsylvania, made conformably to an Act of Assembly approved the 16th day of February, 1833, I have hereunto set my Hand and caused the Seal of said Department to be affixed at Harrisburg, this Ninth day of September 1904.

Joseph P. Brown
Secretary of Internal Affairs.